

W:\ENGINEERING\CURRENT PROJECTS\Knox Cattle Co. Dam\DESIGN\MTY CAD\PLAN W SURFACE.dwg\_27-Nov-24 4:30 PM



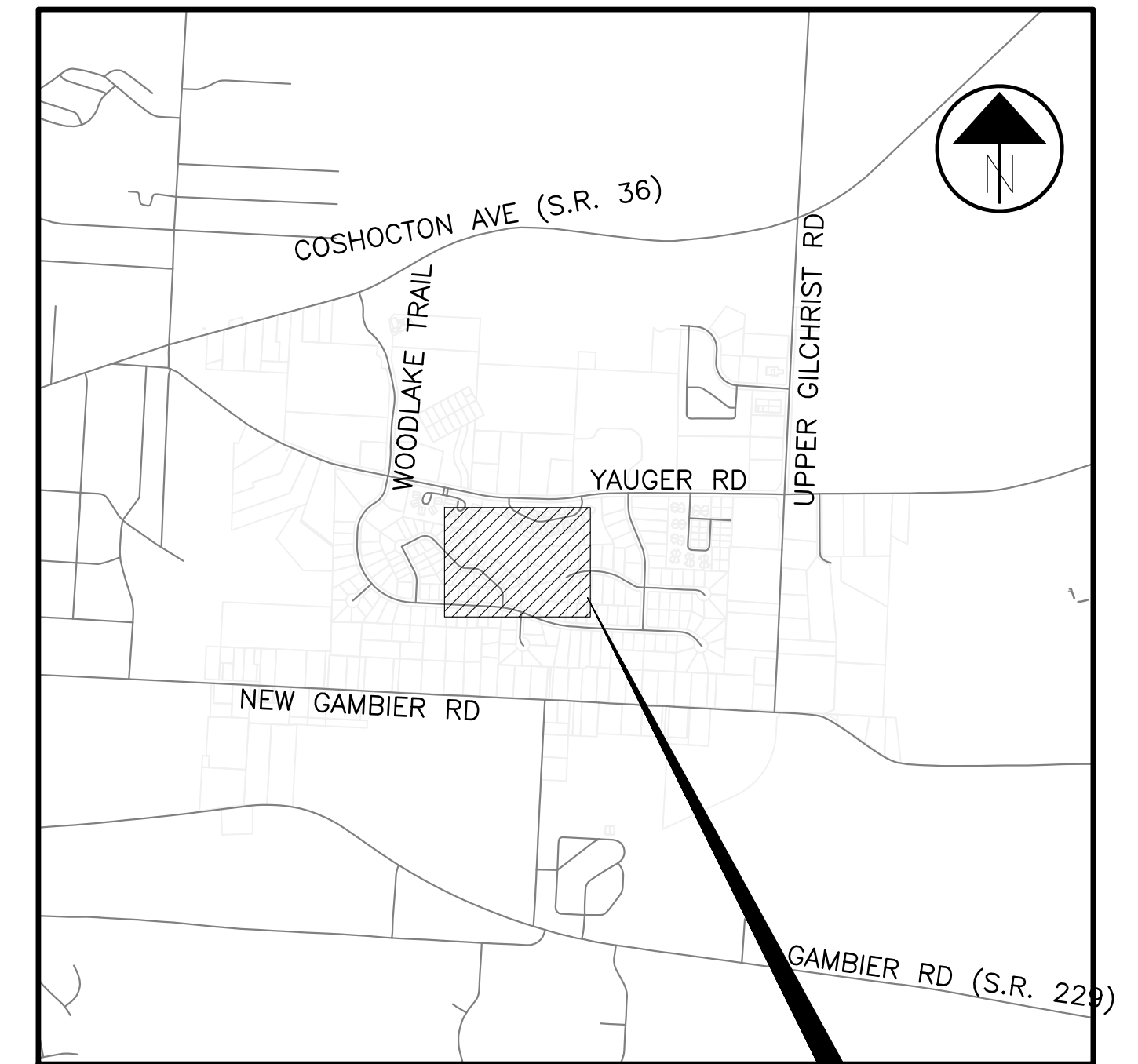
VICINITY MAP

# KNOX CATTLE CO. DAM REHABILITATION

## CITY OF MOUNT VERNON, KNOX COUNTY, OHIO

PROJECT NO. 2122502

2024



LOCATION MAP  
SCALE: 1" = 1/4 MILE

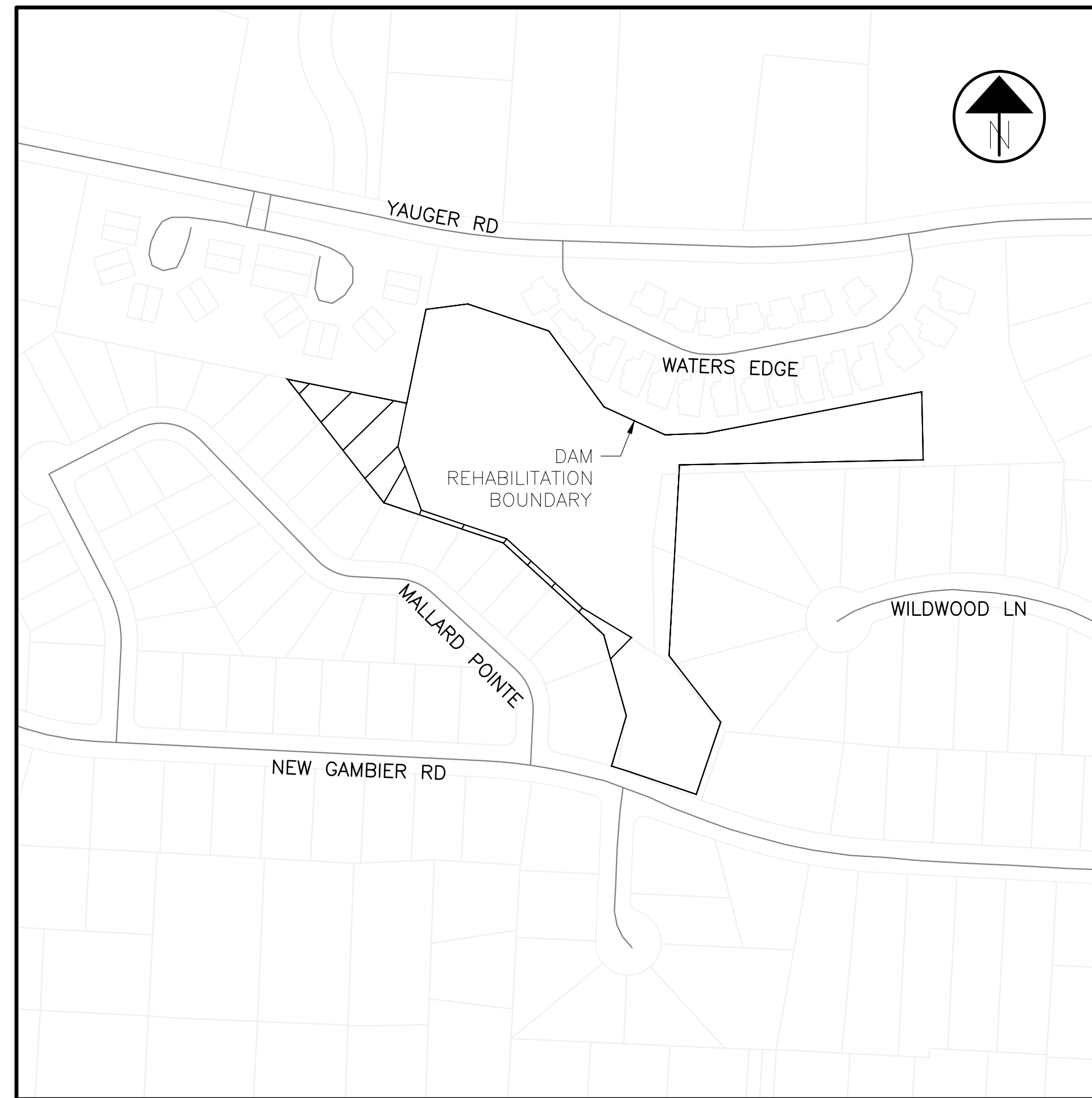
**PROJECT LOCATION**

**PROJECT DESCRIPTION**

THIS PROJECT INVOLVES THE REHABILITATION OF THE KNOX CO. CATTLE DAM.

**INDEX OF SHEETS:**

TITLE SHEET	1
GENERAL NOTES	2 - 3
EXISTING CONDITIONS AND REMOVAL PLAN AND PROFILE	4
BASE CONTRACT PH1 PLAN AND PROFILE	5
ADD ALTERNATE PLAN PH2	6



INDEX MAP  
SCALE: 1" = 200'

**DAM INFORMATION**

DAM ID No.: #OH01856  
 OWNER: The Landings Property Owners Association, Inc.  
 RECEIVER (ON BEHALF OF OWNER): Intercept Management Corp  
 REGULATING AUTHORITY: The City of Mount Vernon



PLAN PREPARED BY:  
CITY OF MOUNT VERNON, OHIO  
ENGINEERING DEPARTMENT

REVISION DATE	DESCRIPTION OF REVISIONS	SHEETS REVISED

**ADMINISTRATION**

MATTHEW T. STARR	MAYOR
TANNER SALYERS	SAFETY-SERVICE DIRECTOR
P. ROBERT BROEREN, JR	LAW DIRECTOR
PAUL MAYVILLE	AUDITOR
BRIAN W. BALL, P.E.	CITY ENGINEER

**CITY COUNCIL**

BRUCE HAWKINS	PRESIDENT
JAMES MAHAN	FIRST WARD
JOHN RUCKMAN	SECOND WARD
TAMMY WOODS	THIRD WARD
MIKE MILLER	FOURTH WARD
AMBER KEENER	AT-LARGE
MEL SEVERNS	AT-LARGE
JANIS SEAVOLT	AT-LARGE

\_\_\_\_\_  
BRIAN W. BALL, P.E.  
CITY ENGINEER

DATE

\_\_\_\_\_  
TANNER SALYERS  
SAFETY-SERVICE DIRECTOR

DATE

PROJECT NO. 2122502

KNOX CO. CATTLE DAM REHABILITATION  
TITLE SHEET

CITY OF MOUNT VERNON, OHIO  
ENGINEERING DEPARTMENT





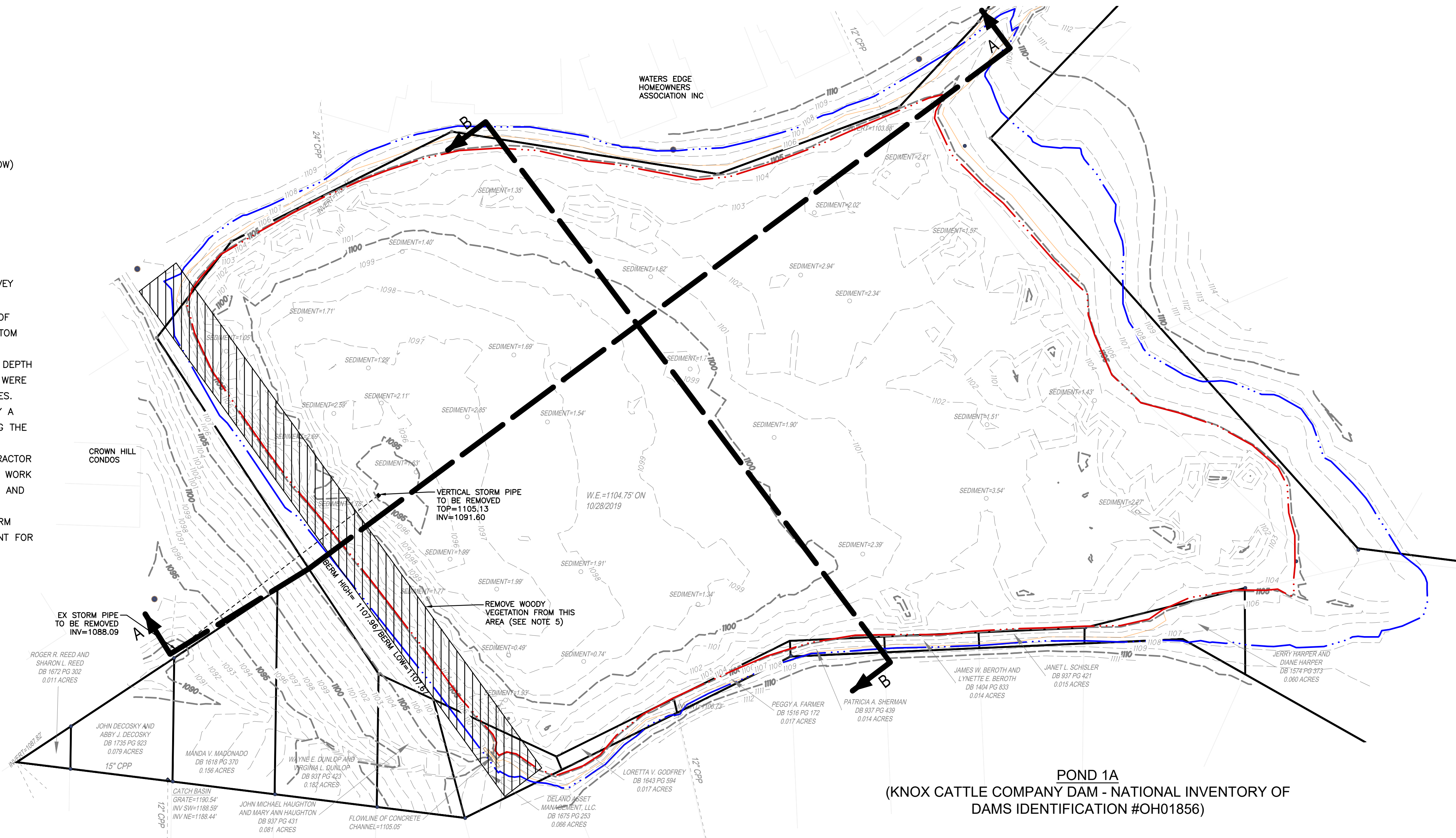
W:\ENGINEERING\CURRENT PROJECTS\Knox Cattle Co. Dam\DESIGN\MTV CAD\Dam PLAN W SURFACE.dwg 27-Nov-24 12:51 PM

**GRADING LEGEND**

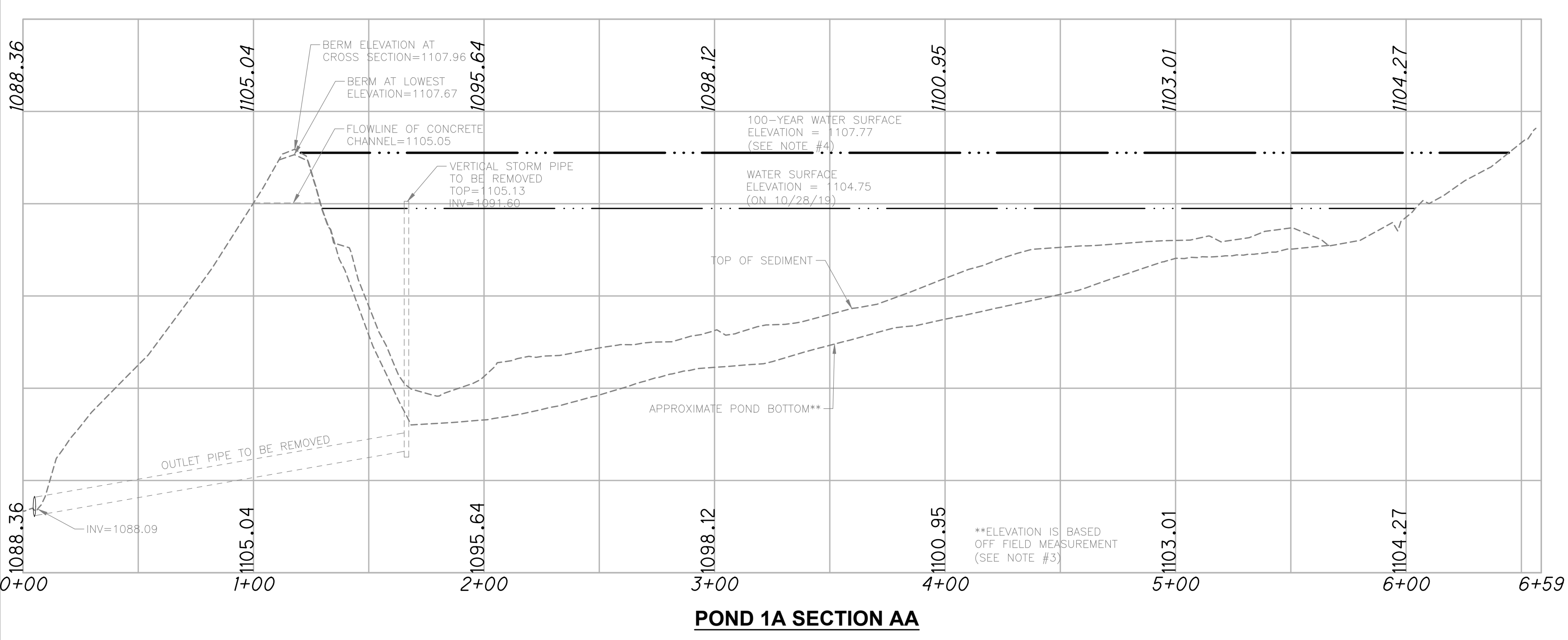
- EXISTING MAJOR CONTOUR
- EXISTING MINOR CONTOUR
- SEDIMENT=1.71' SEDIMENT DEPTH POINT (SEE NOTE #3 BELOW)
- WATER SURFACE ELEVATION
- 100-YEAR WATER SURFACE ELEVATION (SEE NOTE #4 BELOW)

**NOTES**

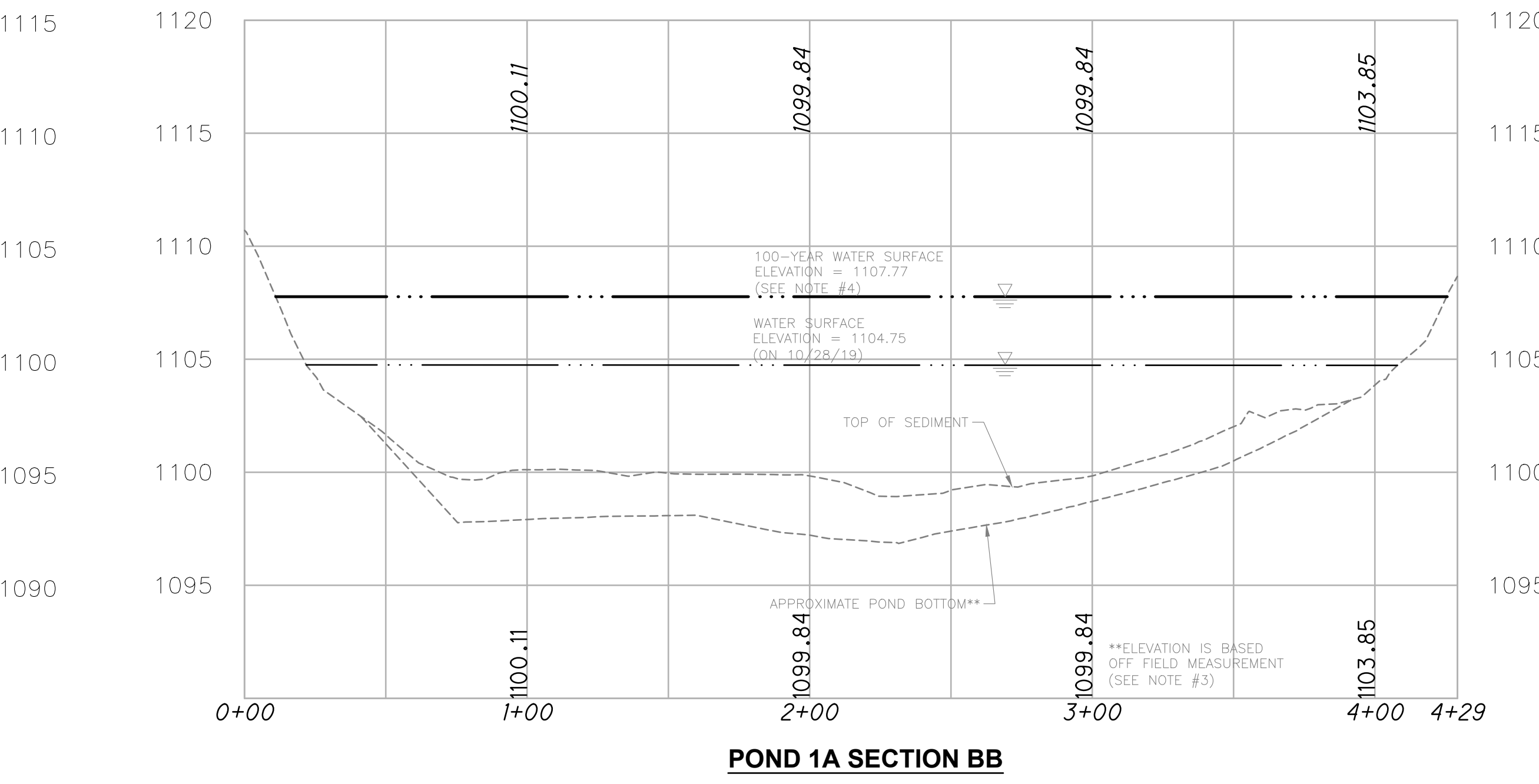
1. BASEMAP DATE REFERENCED FROM BATHYMETRIC & UTILITY SURVEY PREPARED BY THE KLEINGERS GROUP, DATED 12/05/19.
2. COUNTOURS BELOW THE WATER SURFACE ARE REPRESENTATIVE OF SEDIMENT ACCUMULATION DEPTH AND NOT THE TRUE BASIN BOTTOM ELEVATION.
3. SEDIMENT DEPTH POINTS ARE SURVEY POINTS WHERE SEDIMENT DEPTH WAS MEASURED. THESE POINTS AND THE LAND WATER CONTACT WERE USED TO CREATE THE APPROXIMATE POND BOTTOM SECTION LINES.
4. THE 100 YEAR WATER SURFACE ELEVATION WAS ESTABLISHED BY A HYDROLOGIC STUDIO 2019 V3.0.0.13 COMPUTER SOFTWARE.
5. THE CITY OF MOUNT VERNON ENGINEER WILL DIRECT THE CONTRACTOR AS TO THE EXACT LIMITS OF WOODY VEGETATION REMOVAL. THIS WORK SHALL BE PERFORMED PER PLAN SPECIFICATION 3.3.1 CLEARING AND GRUBBING.
6. THE REMOVAL OF THE EXISTING VERTICAL STORM PIPE AND STORM SEWER SHALL BE PERFORMED PER ODOT CMS 202. THE PAYMENT FOR THIS ITEM SHALL BE LUMPED INTO THE NEW CONCRETE OUTLET STRUCTURE DETAILED ON SHEET 5.



**POND 1A  
(KNOX CATTLE COMPANY DAM - NATIONAL INVENTORY OF DAMS IDENTIFICATION #OH01856)**



**POND 1A SECTION AA**



**POND 1A SECTION BB**

HORIZONTAL SCALE IN FEET

CALCULATED BAB
CHECKED BWB

KNOX CATTLE DAM REHABILITATION  
 EXISTING CONDITIONS AND REMOVAL PLAN AND PROFILE

CITY OF MOUNT VERNON, OHIO
ENGINEERING DEPARTMENT

4 / 8

4  
8

W:\ENGINEERING\CURRENT PROJECTS\Knox Cattle Co. Dam\DESIGN\MTV CAD\Dam PLAN W SURFACE.dwg\_27-Nov-24 4:32 PM

**GRADING LEGEND**

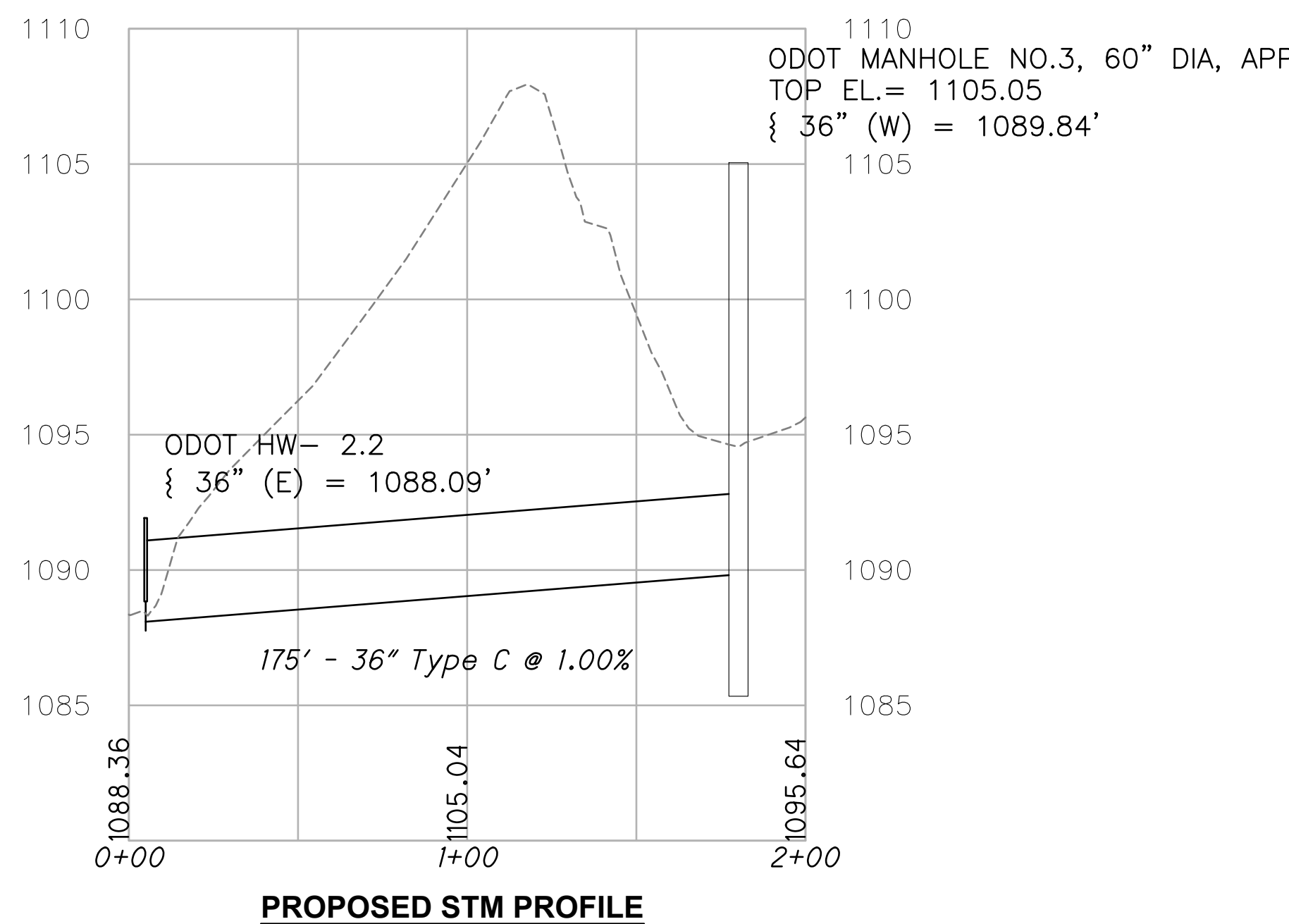
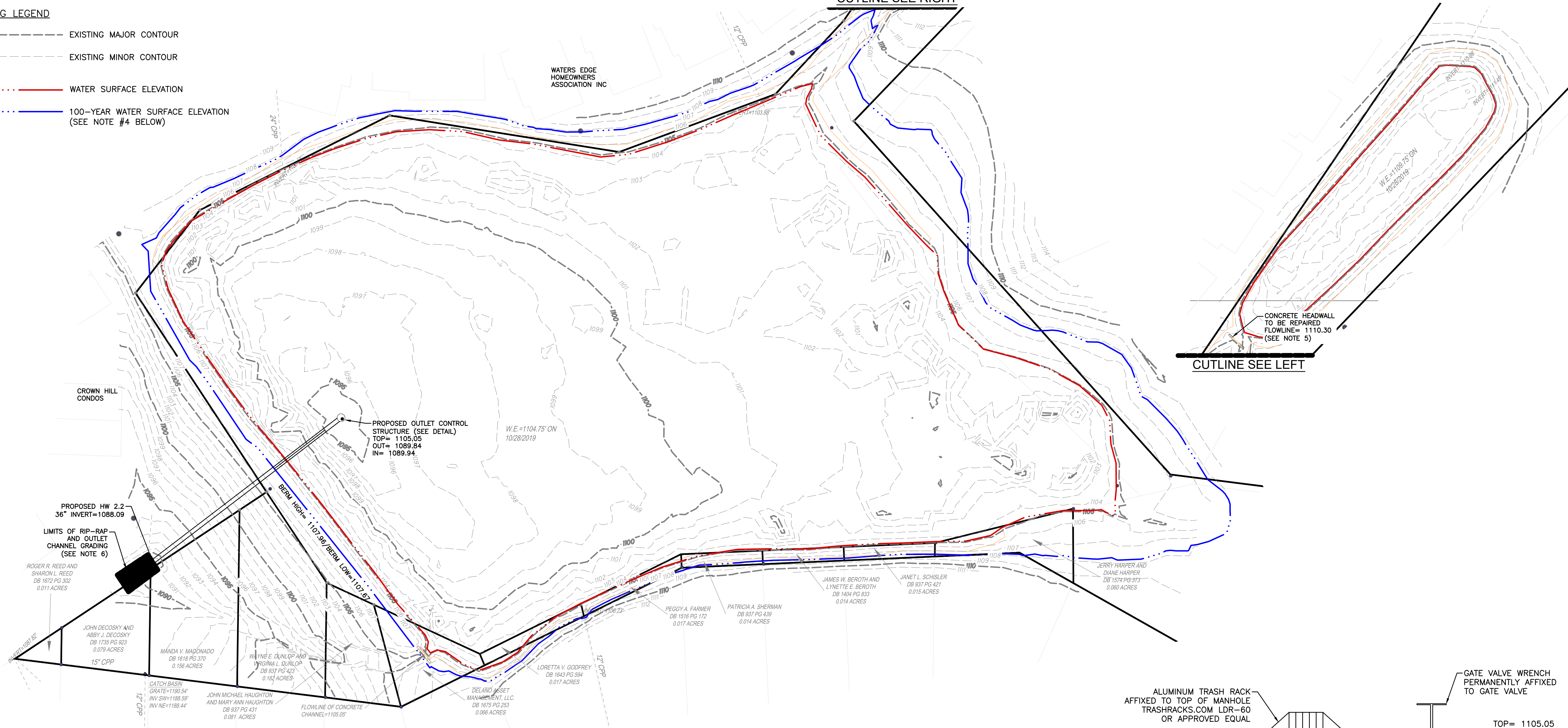
	EXISTING MAJOR CONTOUR
	EXISTING MINOR CONTOUR
	WATER SURFACE ELEVATION
	100-YEAR WATER SURFACE ELEVATION (SEE NOTE #4 BELOW)

CUTLINE SEE RIGHT

CUTLINE SEE LEFT

0 20 40  
HORIZONTAL SCALE IN FEET

CALCULATED BAB  
CHECKED BWB

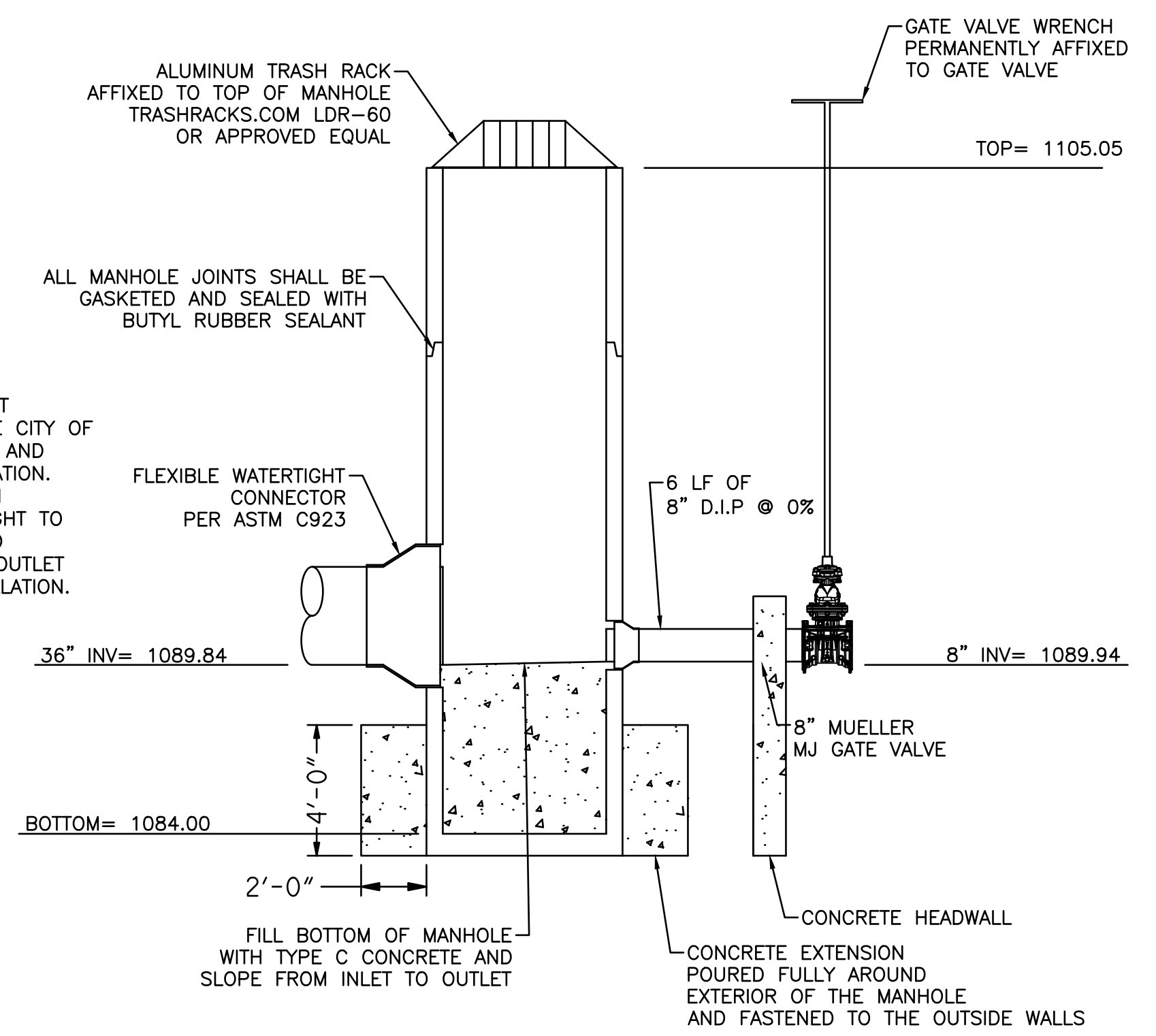


**NOTES**

1. BASEMAP DATE REFERENCED FROM BATHYMETRIC & UTILITY SURVEY PREPARED BY THE KLEINGERS GROUP, DATED 12/05/19.
2. COUNTOURS BELOW THE WATER SURFACE ARE REPRESENTATIVE OF SEDIMENT ACCUMULATION DEPTH AND NOT THE TRUE BASIN BOTTOM ELEVATION.
3. SEDIMENT DEPTH POINTS ARE SURVEY POINTS WHERE SEDIMENT DEPTH WAS MEASURED. THESE POINTS AND THE LAND WATER CONTACT WERE USED TO CREATE THE APPROXIMATE POND BOTTOM SECTION LINES.
4. THE 100 YEAR WATER SURFACE ELEVATION WAS ESTABLISHED BY A HYDROLOGIC MODEL PREPARED BY THE KLEINGERS GROUP USING THE HYDROLOGY STUDIO 2019 V3.0.0.13 COMPUTER SOFTWARE.
5. THE CONCRETE HEADWALL SHALL BE REPAIRED BY FIXING AND CORRECTING THE EROSION ISSUES AROUND THE SIDES OF HEADWALL. THE CONTRACTOR SHALL SUBMIT A REPAIR PLAN THAT IS SUITABLE TO THE CITY OF MOUNT VERNON ENGINEER.
6. THE DOWNSTREAM RIP-RAP PROTECTION AND DOWNSTREAM CHANNEL RE GRADING LIMITS SHALL BE FINALIZED AND MARKED OUT BY THE CITY OF MOUNT VERNON ENGINEER IN CONJUNCTION WITH THE CONTRACTOR ON SITE.

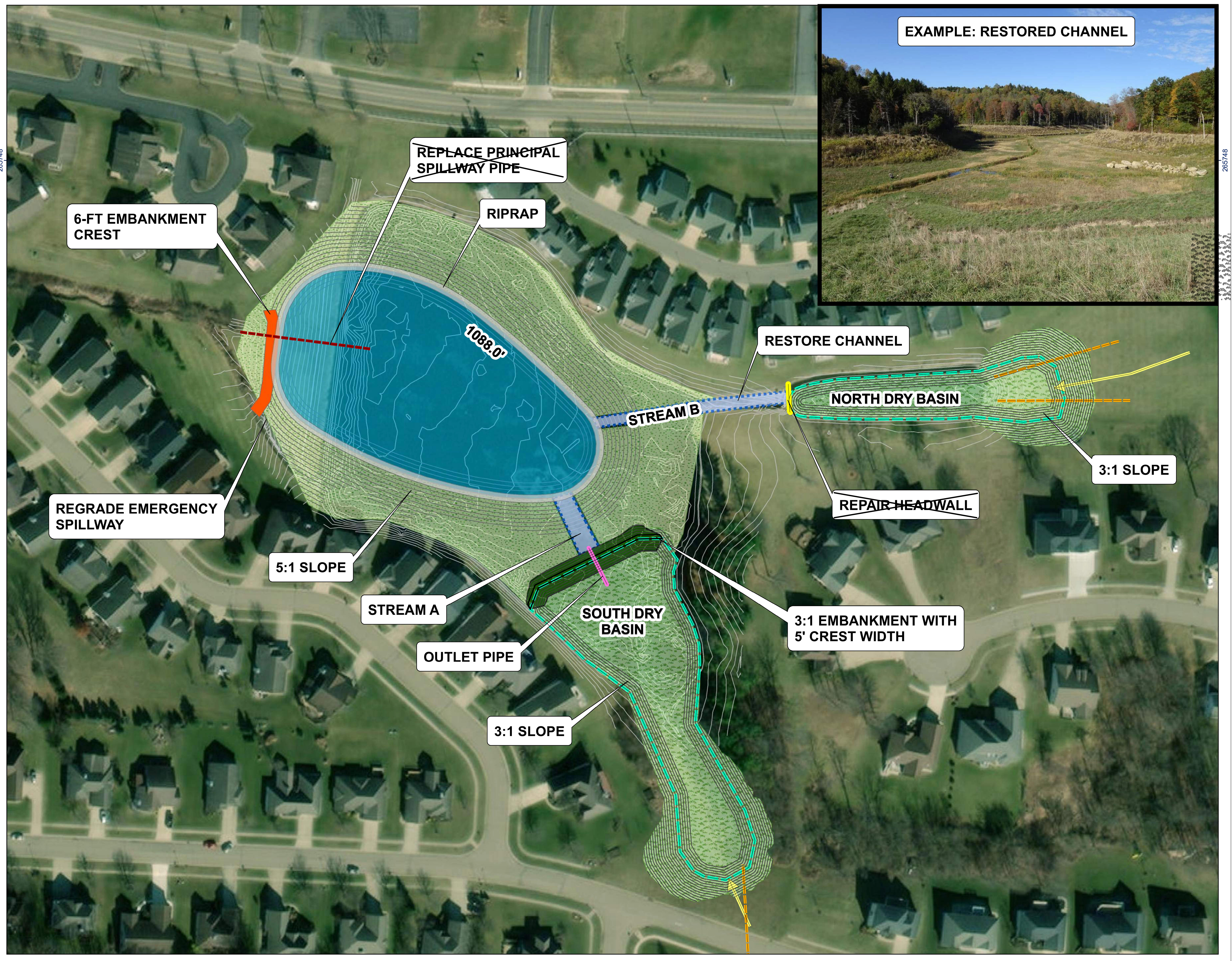
**NOTES:**

1. CONTRACTOR SHALL PROVIDE SUBMITTALS FOR ALL ITEMS ASSOCIATED WITH THE OUTLET CONTROL STRUCTURE TO THE CITY OF MOUNT VERNON FOR REVIEW AND APPROVAL PRIOR TO FABRICATION. THE CITY OF MOUNT VERNON ENGINEER RESERVES THE RIGHT TO MAKE ANY CHANGES, DEEMED NECESSARY, TO THE ABOVE OUTLET STRUCTURE PRIOR TO INSTALLATION.



**MANHOLE NO. 3, 60" DIA, AS PER PLAN**

W:\ENGINEERING\CURRENT PROJECTS\Knox Cattle Co. Dam\DESIGN\MTV CAD\DM PLAN W SURFACE.dwg\_27-Nov-24 4:25 PM  
173410617\gis\mxd\mvernon\_alba\_11x17.mxd Revised: 2022-06-30 By: dboluhasz



**Legend**

- Existing 1-ft Contours
- Proposed 1-ft Contours
- Existing Storm Pipe
- Flow Arrows
- New Embankment Crest (<6 ft)
- New Upstream Pond (4-ft depth)
- Riprap
- Inlet Channels
- Dry Basin
- Embankment
- Grass

265748

265748

CITY OF MOUNT VERNON, OHIO  
ENGINEERING DEPARTMENT

KNOX CATTLE CO. DAM REHABILITATION  
ADD ALTERNATE PLAN PH2

6/6

0/0

0 20 40  
HORIZONTAL  
SCALE IN FEET

CALCULATED  
BAB

CHECKED  
BWB