



MOUNT VERNON MUNICIPAL COURT
MAIN ENTRANCE VIEW
SEPTEMBER 25, 2023





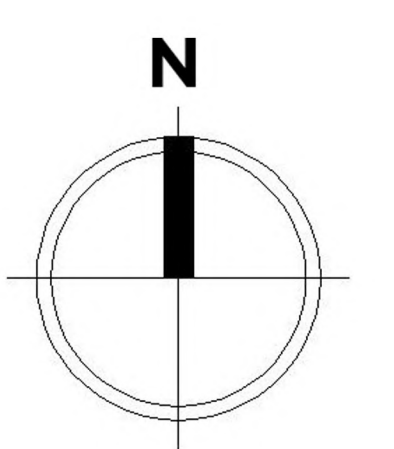
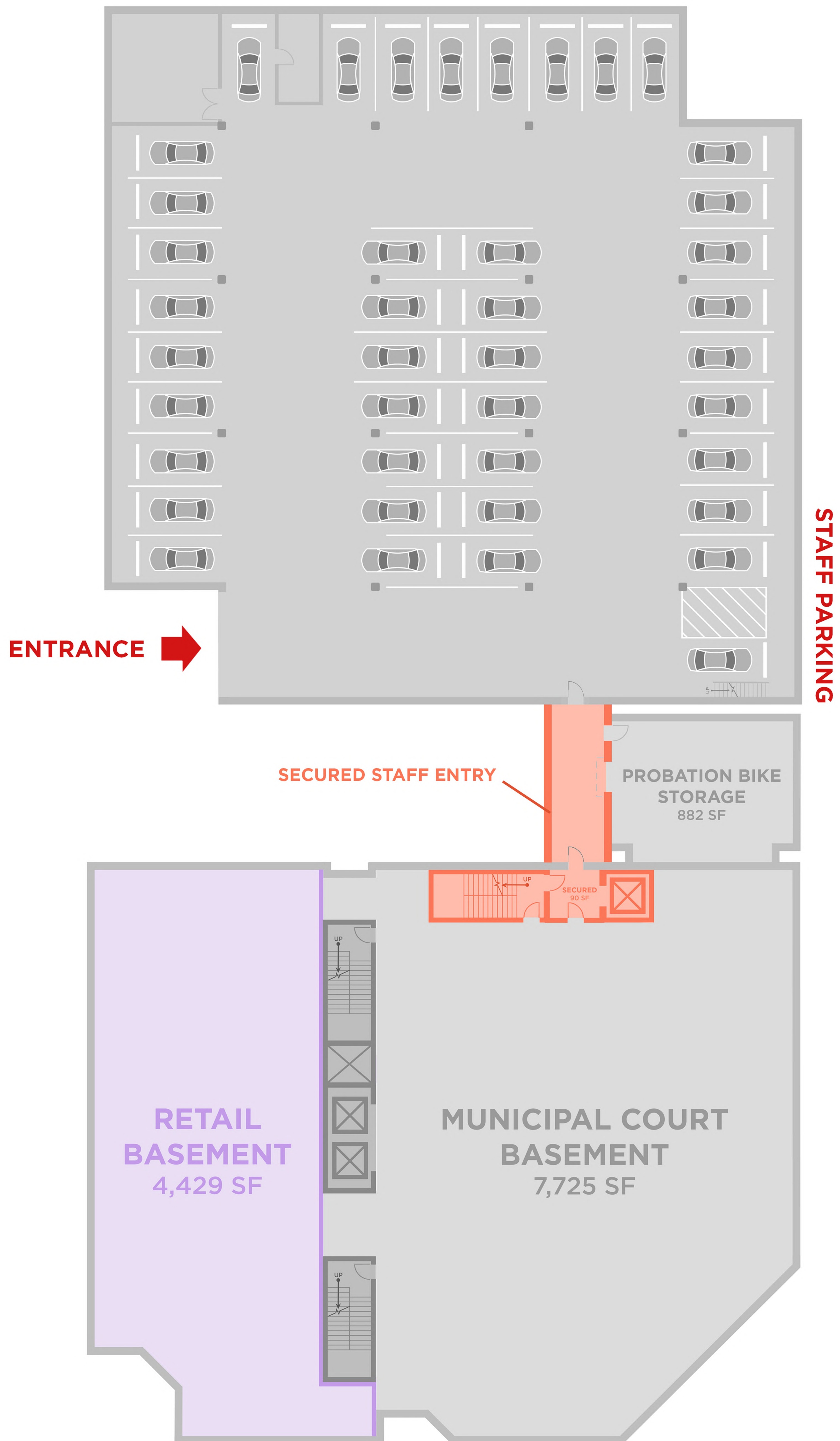
MOUNT VERNON MUNICIPAL COURT
TURRET VIEW
SEPTEMBER 25, 2023





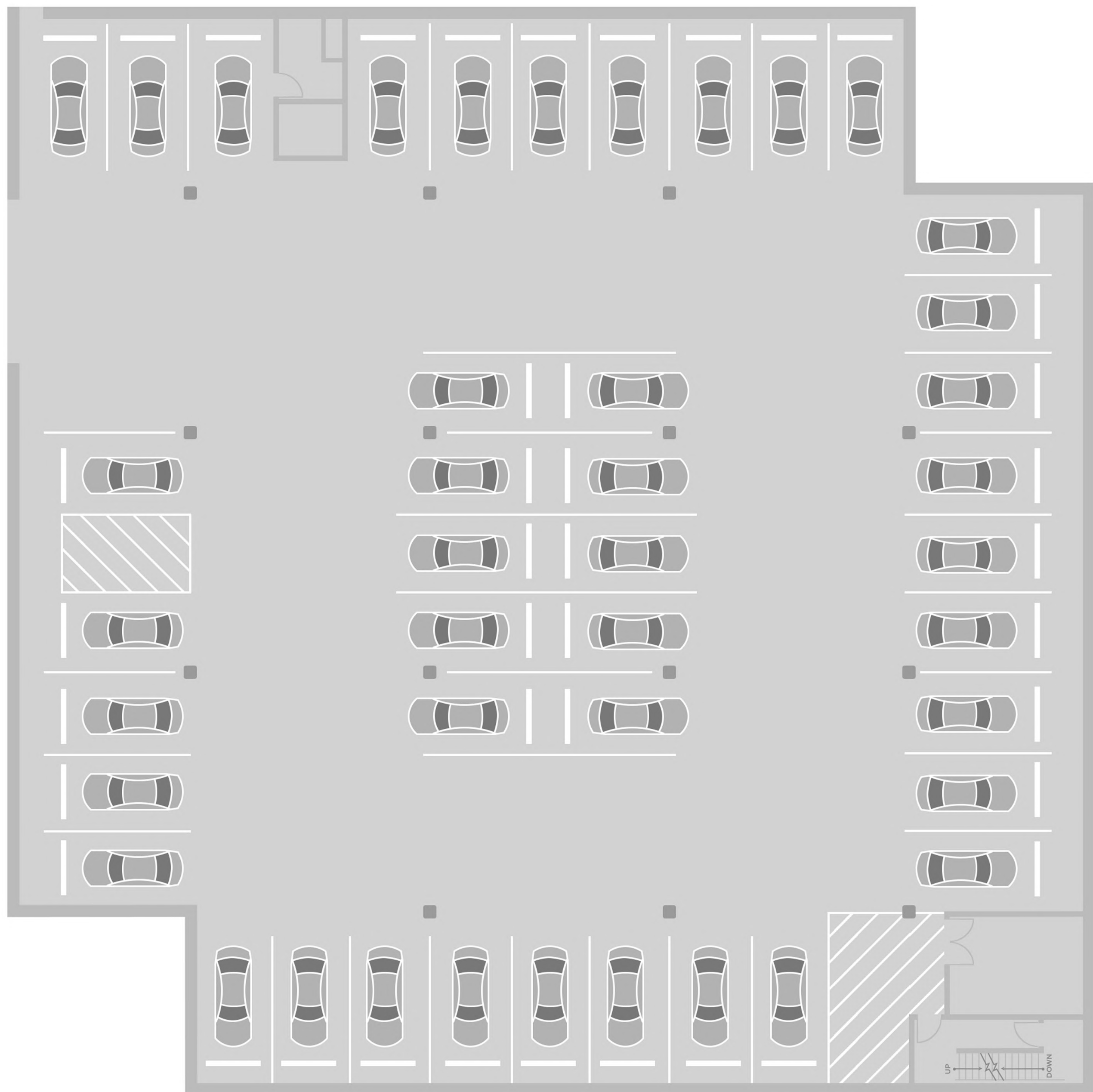
MOUNT VERNON MUNICIPAL COURT
SALLYPORT VIEW
SEPTEMBER 25, 2023





SCALE: 1" = 10'

ENTRANCE

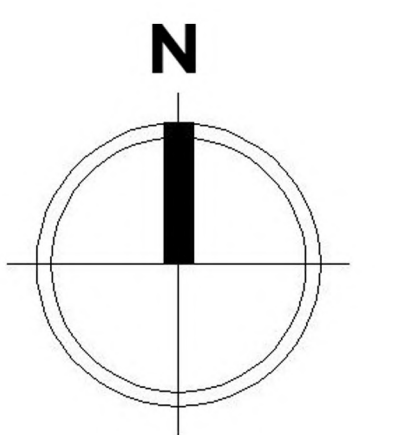
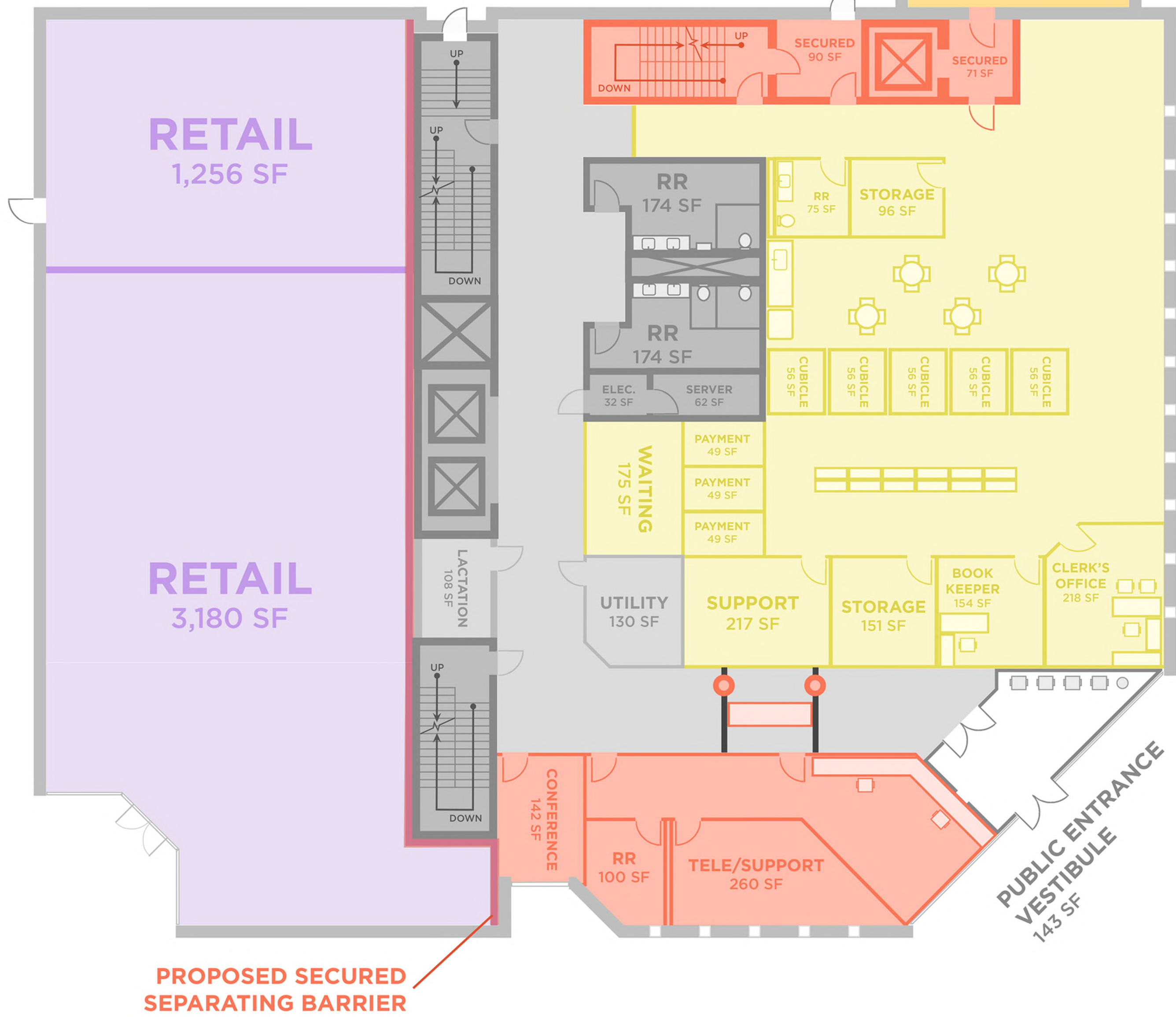


STAFF PARKING

RAMP

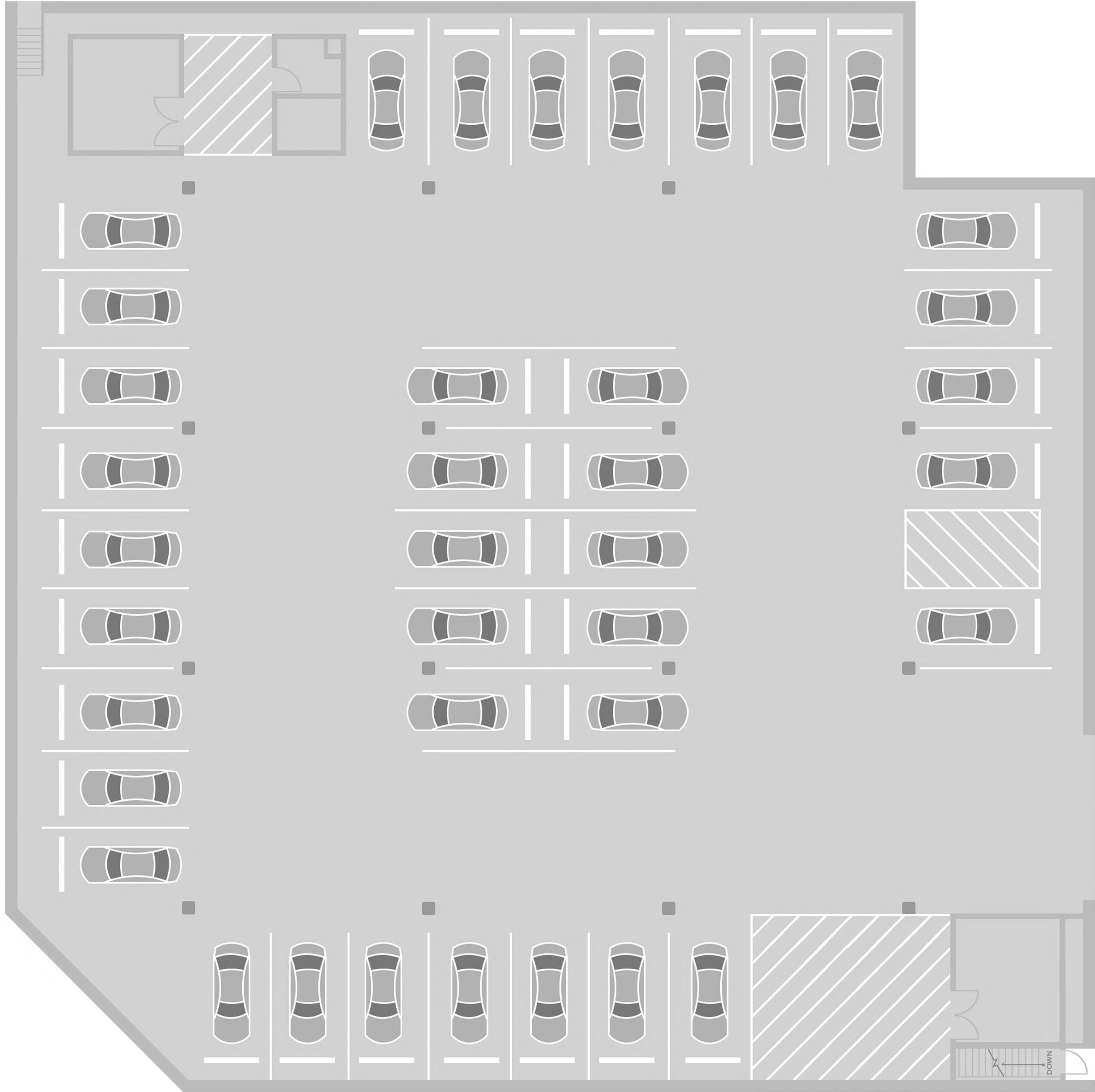


SALLYPORT
882 SF

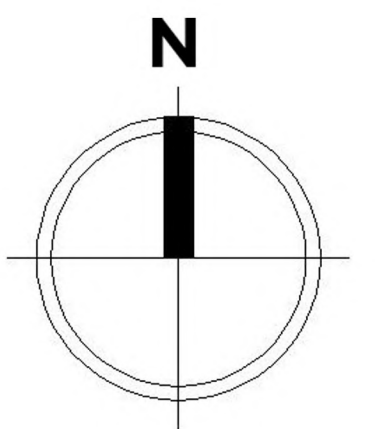


SCALE: 1" = 10'

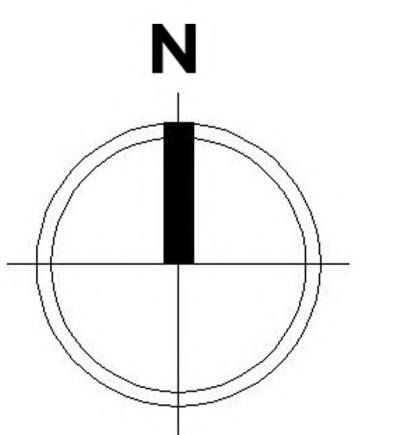
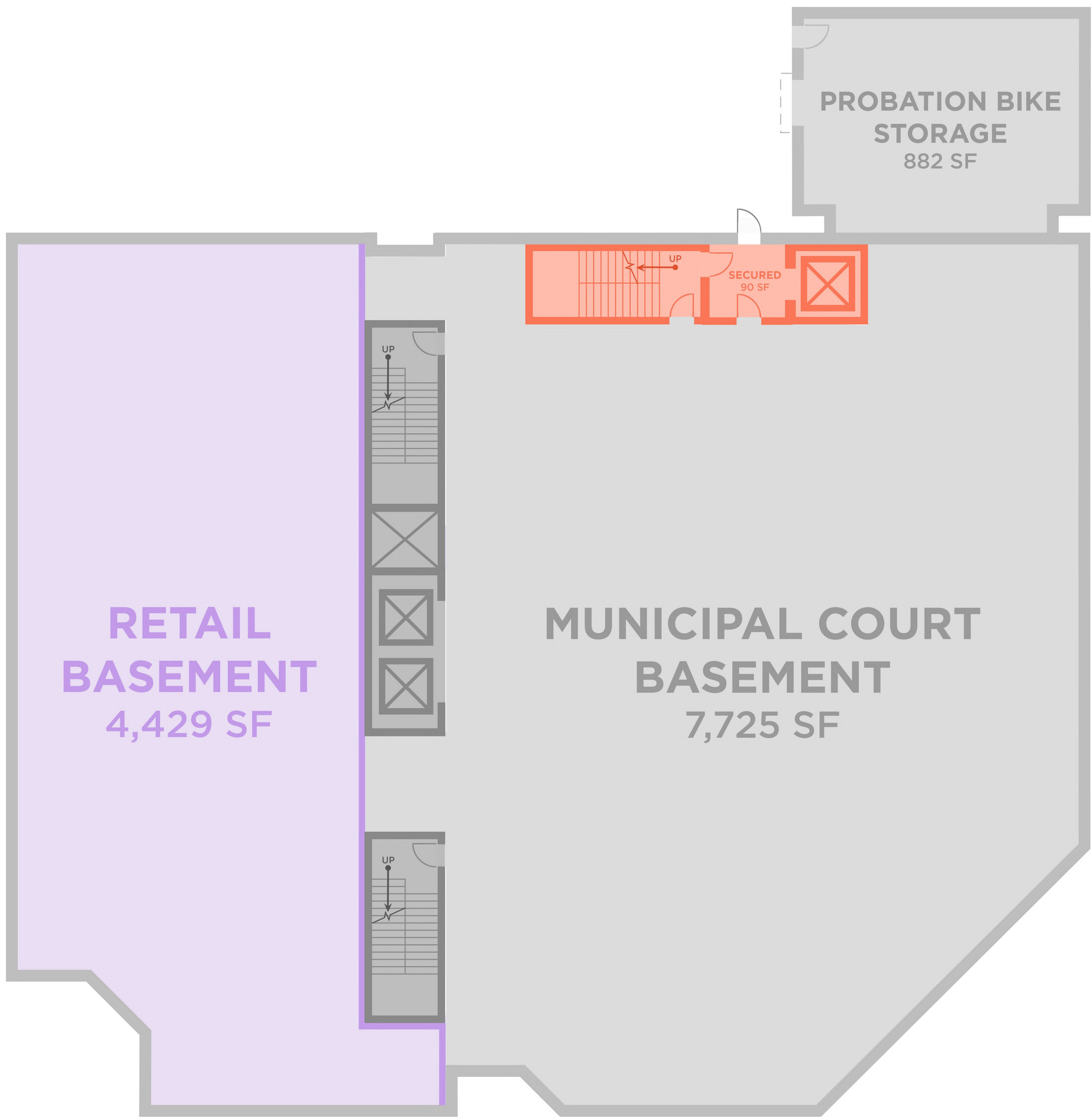
PUBLIC PARKING



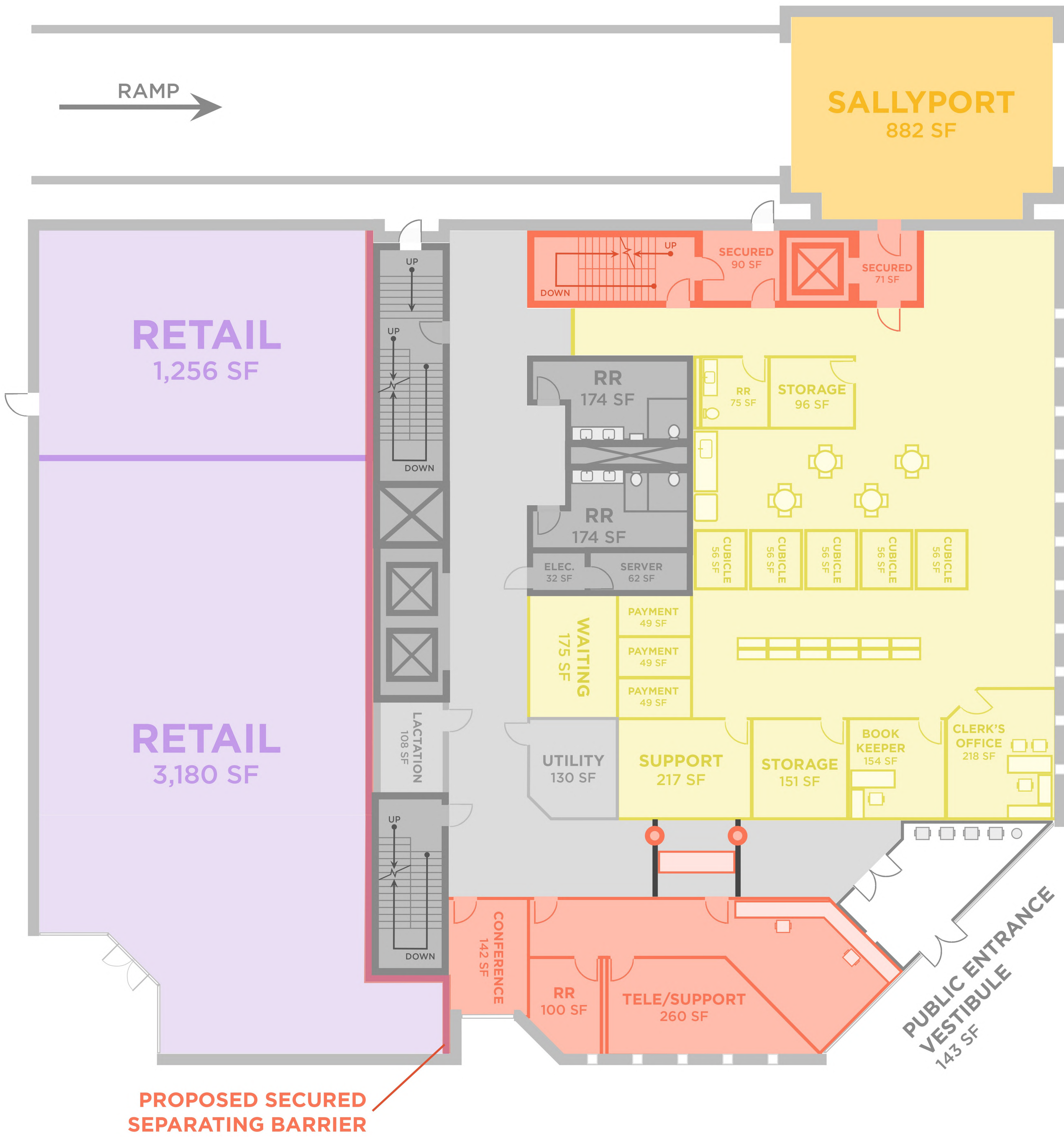
ENTRANCE



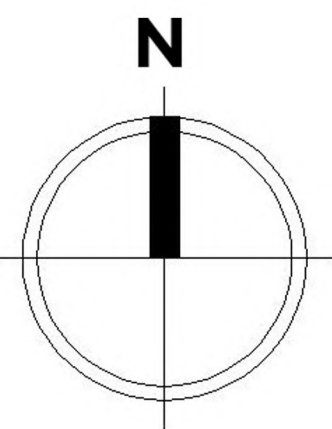
SCALE: 1" = 10'



SCALE: 1/8" = 1'-0"



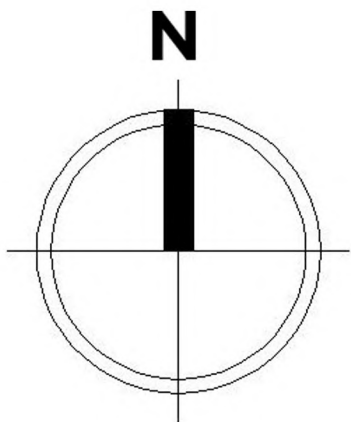
- SECURITY**
982 SF
- CLERK'S OFFICE**
3,775 SF



SCALE: 1/8" = 1'-0"

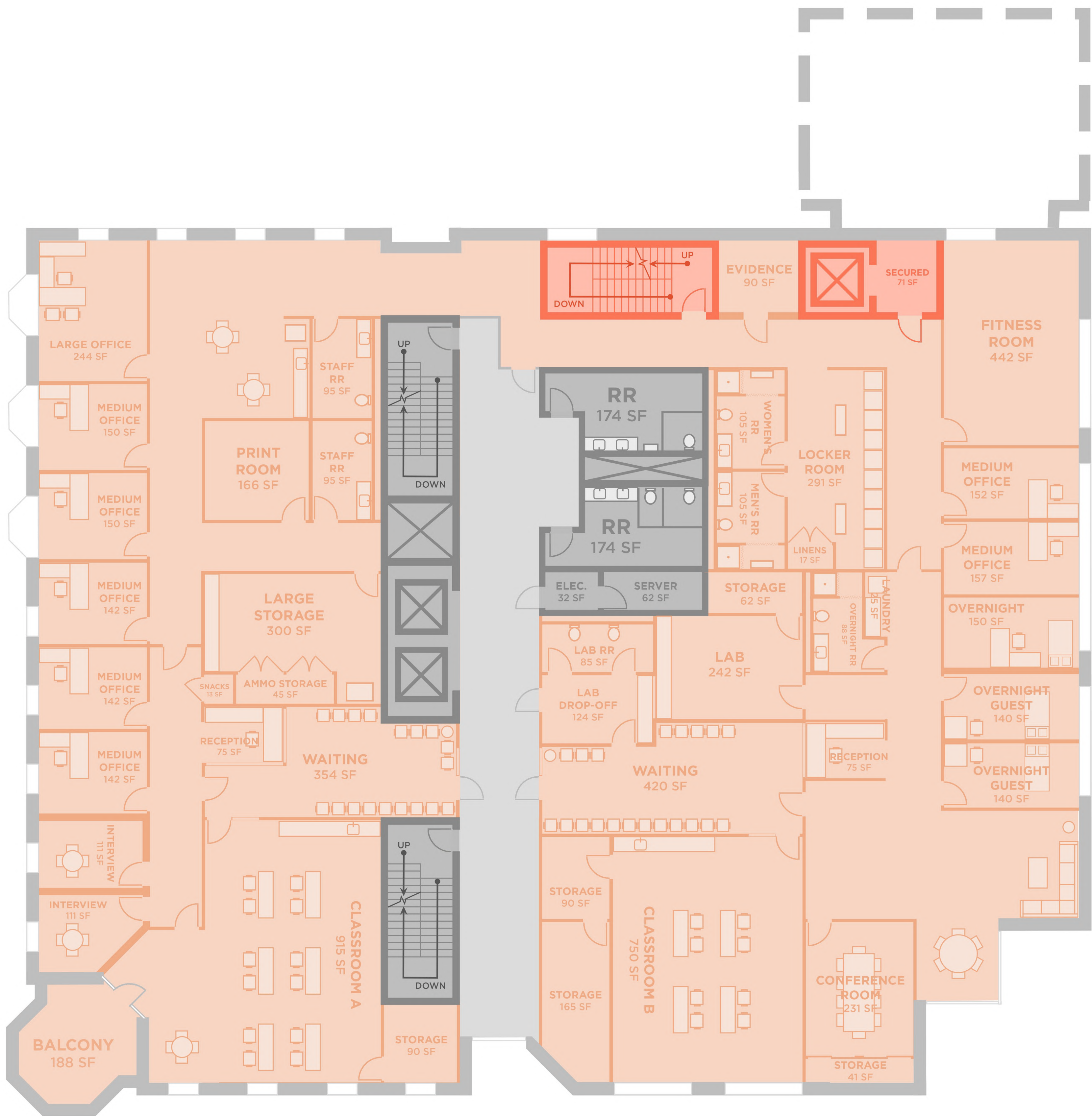


- COURT SUPPORT (LEFT)
4,716 SF
- COURTROOM A (RIGHT)
5,756 SF

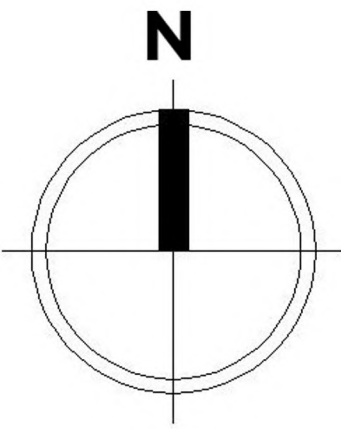


SCALE: 1/8" = 1'-0"





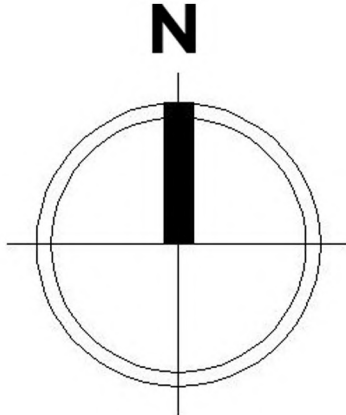
PROBATION
10,175 SF



SCALE: 1/8" = 1'-0"

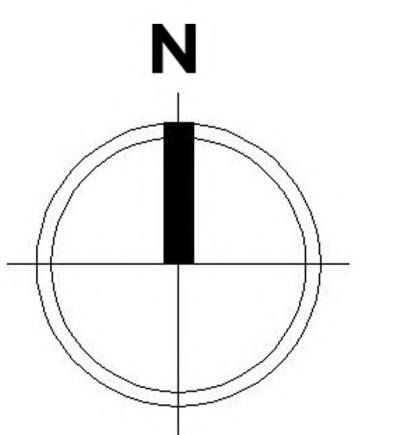
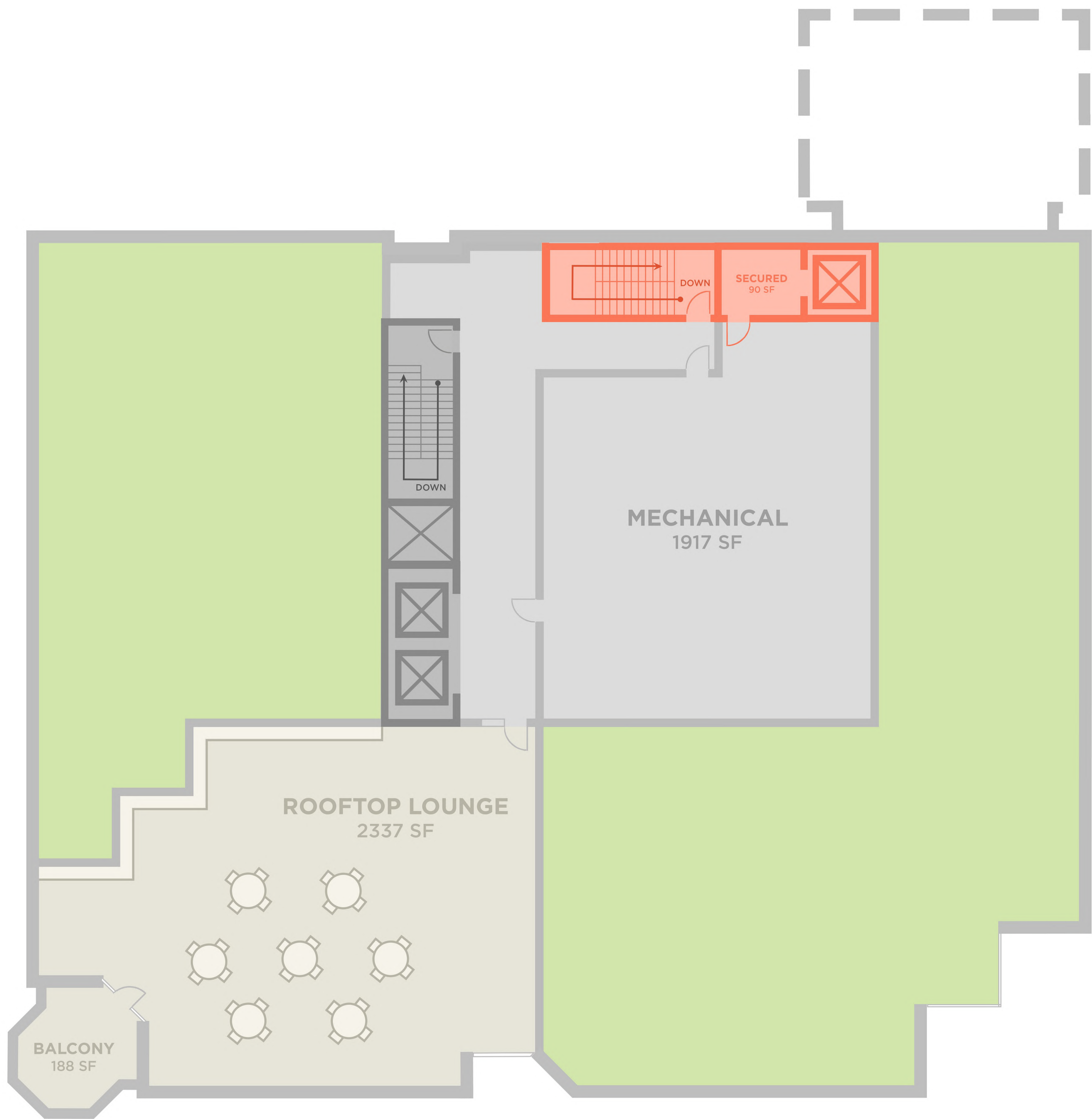


- LAW DIRECTOR**
5,077 SF
- COURTROOM EXPANSION**
5,756 SF



SCALE: 1/8" = 1'-0"





SCALE: 1/8" = 1'-0"