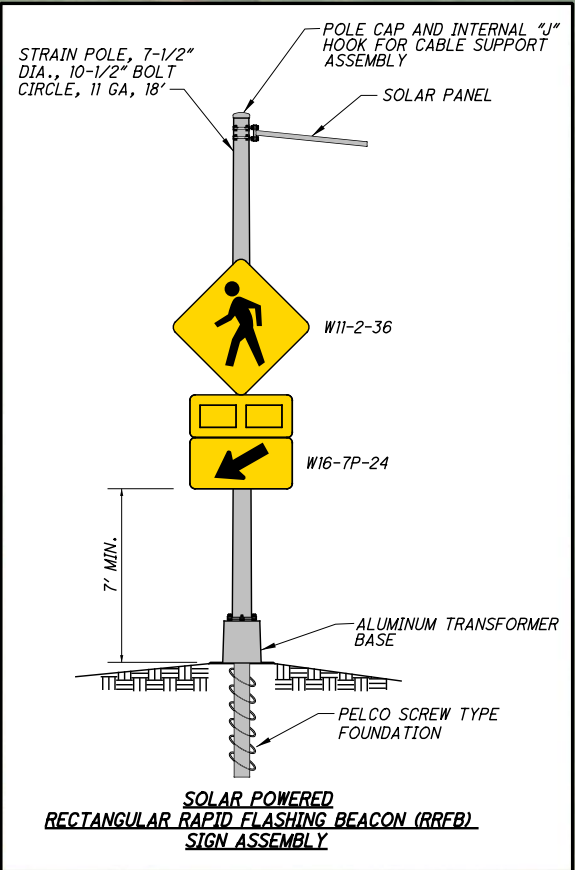
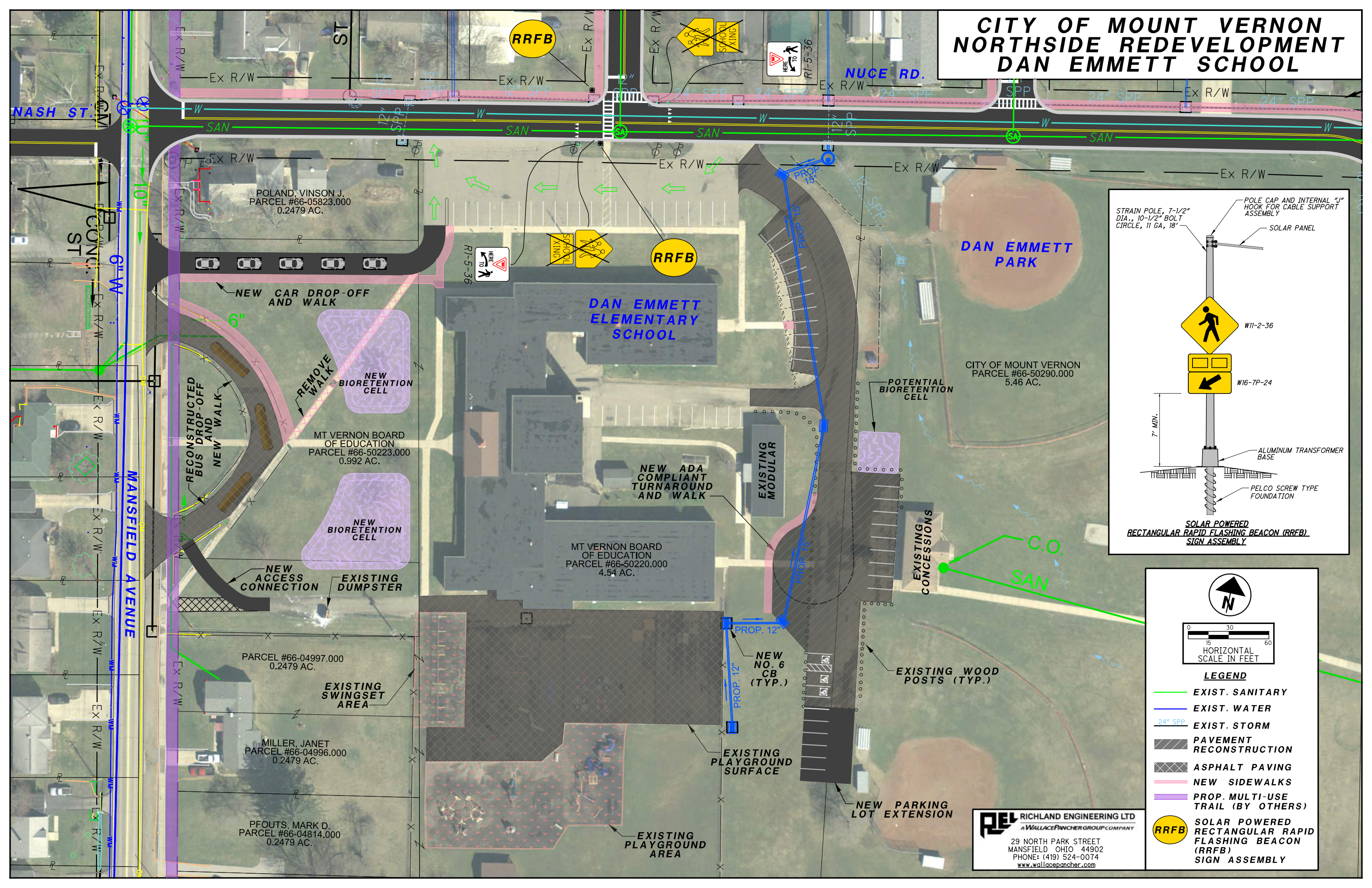


CITY OF MOUNT VERNON NORTHSIDE REDEVELOPMENT DAN EMMETT SCHOOL



HORIZONTAL SCALE IN FEET

LEGEND

- EXIST. SANITARY
- EXIST. WATER
- 24" SPP EXIST. STORM
- PAVEMENT RECONSTRUCTION
- ASPHALT PAVING
- NEW SIDEWALKS
- PROP. MULTI-USE TRAIL (BY OTHERS)
- SOLAR POWERED RECTANGULAR RAPID FLASHING BEACON (RRFB) SIGN ASSEMBLY

RE RICHLAND ENGINEERING LTD
A WALLACEPANCHER GROUP COMPANY
29 NORTH PARK STREET
MANSFIELD OHIO 44902
PHONE: (419) 524-0074
www.wallacepancher.com